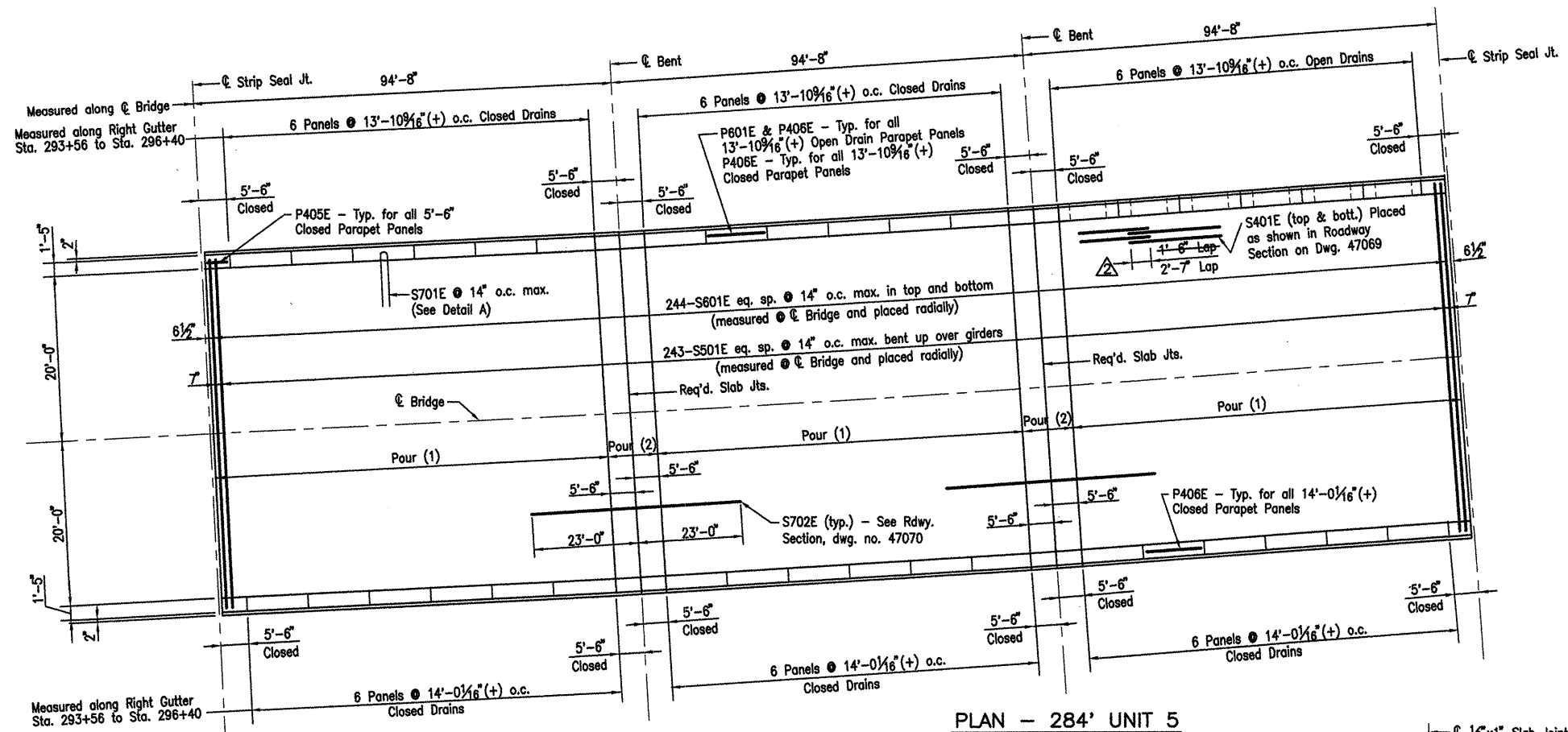


DATE REVISED	DATE FILMED	DATE REVISED	DATE FILMED	FED. ROAD NO.	STATE	FED. AID PROJ. NO.	SHEET NO.	TOTAL SHEETS
11-1-10					ARK.			
4-4-11								
				JOB NO.	110395	77	203	
				06830	284' UNIT	47073A		

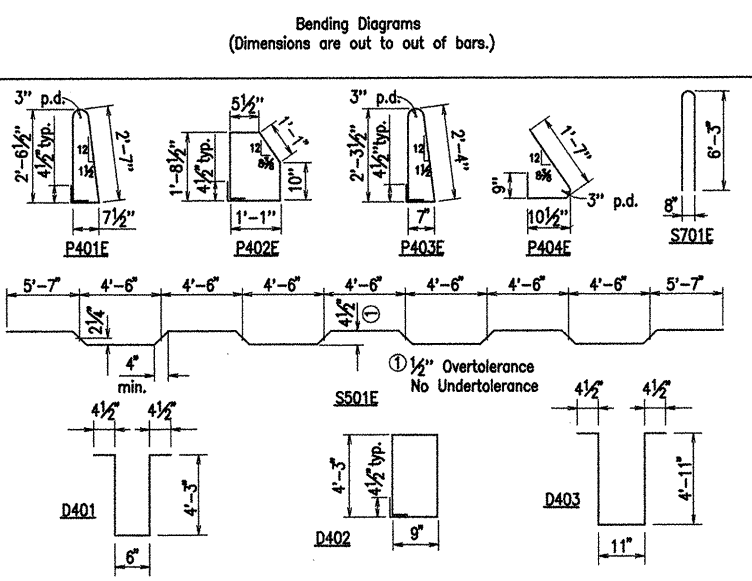


PLAN - 284' UNIT 5
N.T.S.
Sta. 293+56 to Sta. 296+40 (One Unit Required)

NOTE: Pours with the same number may be placed simultaneously or separately. All Pours (1) must be placed before Pours (2) can be placed. 48 hours shall elapse between the end of a pour and the start of the next pour. 72 hours shall elapse between the end of a pour and the start of an adjacent pour. Any railing pours made before the entire slab unit has been placed must be approved by the Bridge Engineer. Concrete in bridge superstructure shall be consolidated for the entire pour before any concrete has taken its initial set. This may require the use of a retarding agent. The Contractor must obtain approval from the Bridge Engineer for any deviations from the pouring sequence.

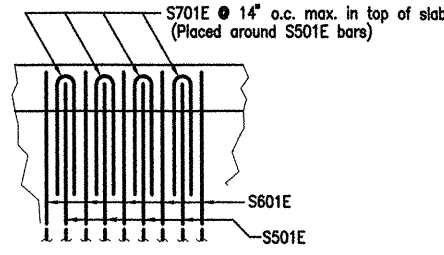
BAR LIST PER 284' UNIT

Mark	No. Req'd.	Length	Dia. Pin
S401E	880	37'-10"	Str.
S501E	243	43'-6"	3"
S601E	488	42'-10"	Str.
S701E	486	12'-10"	6"
S702E	106	46'-0"	Str.
P401E	606	6'-4"	2"
P402E	606	5'-8"	2"
P403E	54	5'-11"	2"
P404E	54	3'-1"	2"
P405E	72	5'-2"	Str.
P406E	180	13'-8"	Str.
P601E	30	13'-8"	Str.
D401	96	9'-5"	2"
D402	64	10'-4"	2"
D403	64	11'-2"	2"
D601	160	6'-9"	Str.
D602	60	7'-4"	Str.
D603	32	20'-7"	Str.



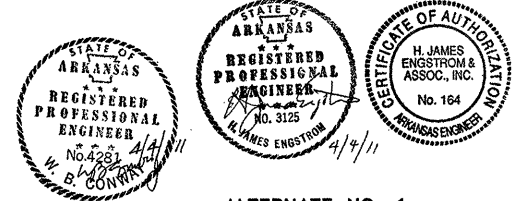
Use 1/2" X 1" Type 3, 4 or 6 Joint Sealer. See Subsection 501.02(h) and 501.05(j). Backer rod shall not be installed. Joint Sealer shall be measured and paid for as Class S(AE) Concrete-Bridge. Slab joints shall extend to the outside edge of the deck slab. Slab joints shall be installed before the parapet railing is poured. If slab joints are to be sawed, they shall be sawed as soon as the concrete has sufficiently set to allow sawing of the joint without damage to the slab. Slab joints shall be placed at all pouring sequence construction joints and required slab joint locations.

SLAB JOINT DETAIL
N.T.S.



DETAIL A
N.T.S.

- Revised Bar List by HJE/MM
GPT - 11-1-10
- Revised Lap Splice by HJE/MM
WBC - 4-4-11



ALTERNATE NO. 1

DETAILS OF 284', 330' & 368' CONT.
PRESTRESSED CONCRETE GIRDER UNIT
(SHEET 13 OF 19)

WHITE RIVER STR. & APPRS.
(CLARENDON) (PH III) (F)
MONROE COUNTY
ROUTE 79 SEC. 13
ARKANSAS STATE HIGHWAY COMMISSION
LITTLE ROCK, ARK.

Engstrom/Modjeski and Masters, Inc.

DRAWN BY: JDB DATE: Sep. 10 FILENAME: b11039512_s11A
CHECKED BY: WBC DATE: Sep. 10 SCALE: 1/16" = 1'-0"
DESIGNED BY: GPT DATE: Sep. 10
BRIDGE NO. 06830 DRAWING NO. 47073A

COMPANY\1999 JOBS\99-044 AHTD\WHITERIVER\JOB 110395\368 slabdetail13 ACAD SCALE: 1/16"=1'-0"